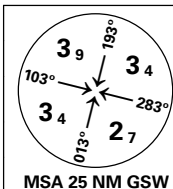
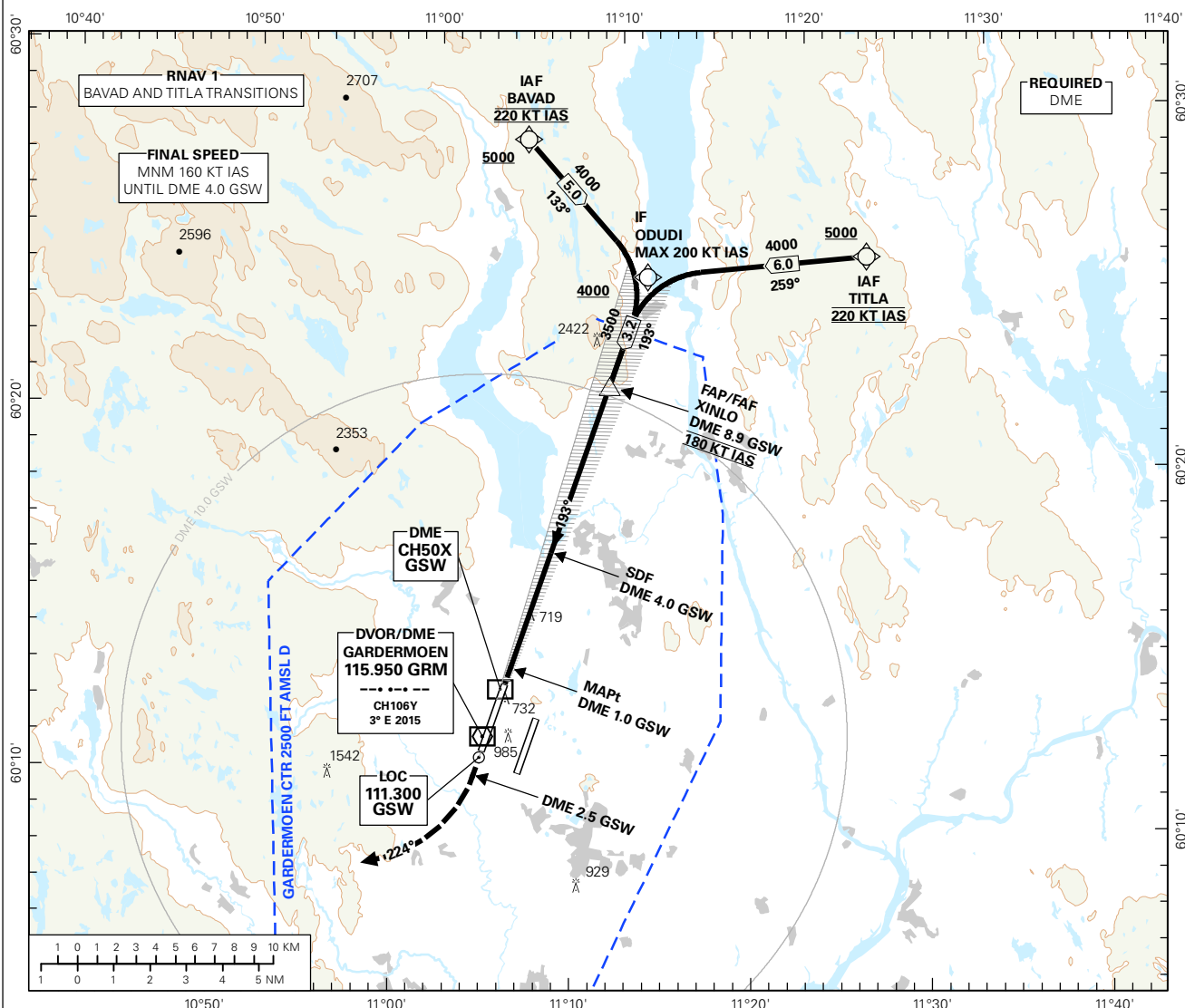


## INSTRUMENT APPROACH CHART - ICAO PLAN VIEW SCALE: 1:350 000

OSLO

GARDERMOEN  
ILS or LOC RWY 19RTRANSITION ALTITUDE  
7000

ATIS: 126.125	AD ELEV: 681	
APP: 118.475 120.450	THR ELEV: 675	DIST IN NM
DIR: 136.400 (119.975)	HGT RELATED TO THR RWY 19R	ELEV, ALT AND HGT IN FT
FIN: 128.900	CIRCLING HGT RELATED TO AD ELEV	
TWR: 118.300 (118.700)	BEARINGS ARE MAGNETIC - VAR 2.8 ° E (2015)	
GND: 121.600		



DIST TO GSW	8	7	6	5	4	3	2	1
ALT (HGT)	3230 (2555)	2910 (2235)	2590 (1915)	2270 (1595)	1950 (1275)	1630 (955)	1320 (645)	1000 (325)

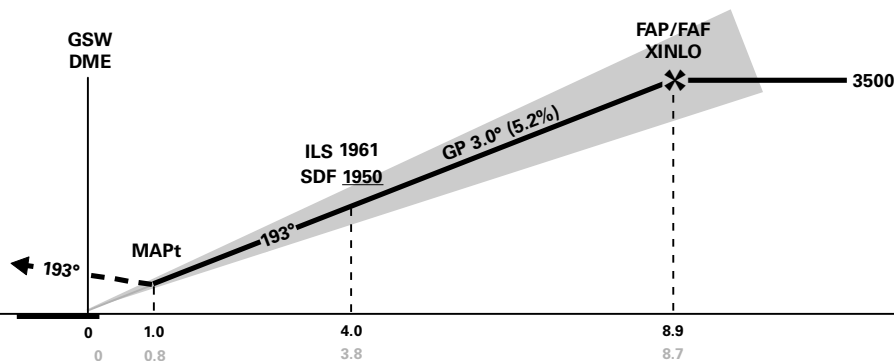
ILS RDH 50

## MISSED APCH:

CLIMB ON RWY TRACK 193°.  
AT DME 2.5 GSW, TURN RIGHT  
TO TRACK 224° CLIMBING TO  
5000. EXPECT VECTORING  
BY OSLO APP.

## RCF:

CONTINUE ON TRACK 224°. CLIMB  
TO 5000. AT DME 20.0 GSW,  
TURN RIGHT DCT GRM FOR  
NEW INSTRUMENT APCH.



CAT OF ACFT	A	B	C	D	FINAL APCH	DIST FAF - MAPt: 7.9
OCA(H)	CAT I 822 (147)	831 (156)	844 (169)	858 (183)	SPEED	KT 70 90 120 150 180
STRAIGHT - IN	CAT II 725 (50)	735 (60)	748 (73)	761 (86)	TIME	MIN:SEC 06:45 05:15 03:57 03:09 02:38
CIRCLING	1280 (599)	1980 (1299)	2230 (1549)		ROD	FT/MIN 370 480 640 795 955

NOTE: CAT IIIB APPROVED. CIRCLING W/ OF RWY ONLY.

CHANGES: SPEED RESTRICTIONS.

Avinor

17 SEP 2015

THIS PAGE INTENTIONALLY LEFT BLANK